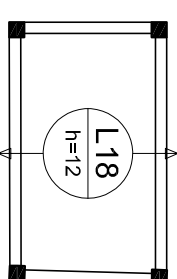
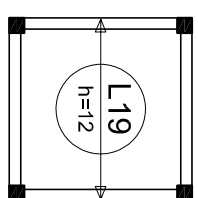
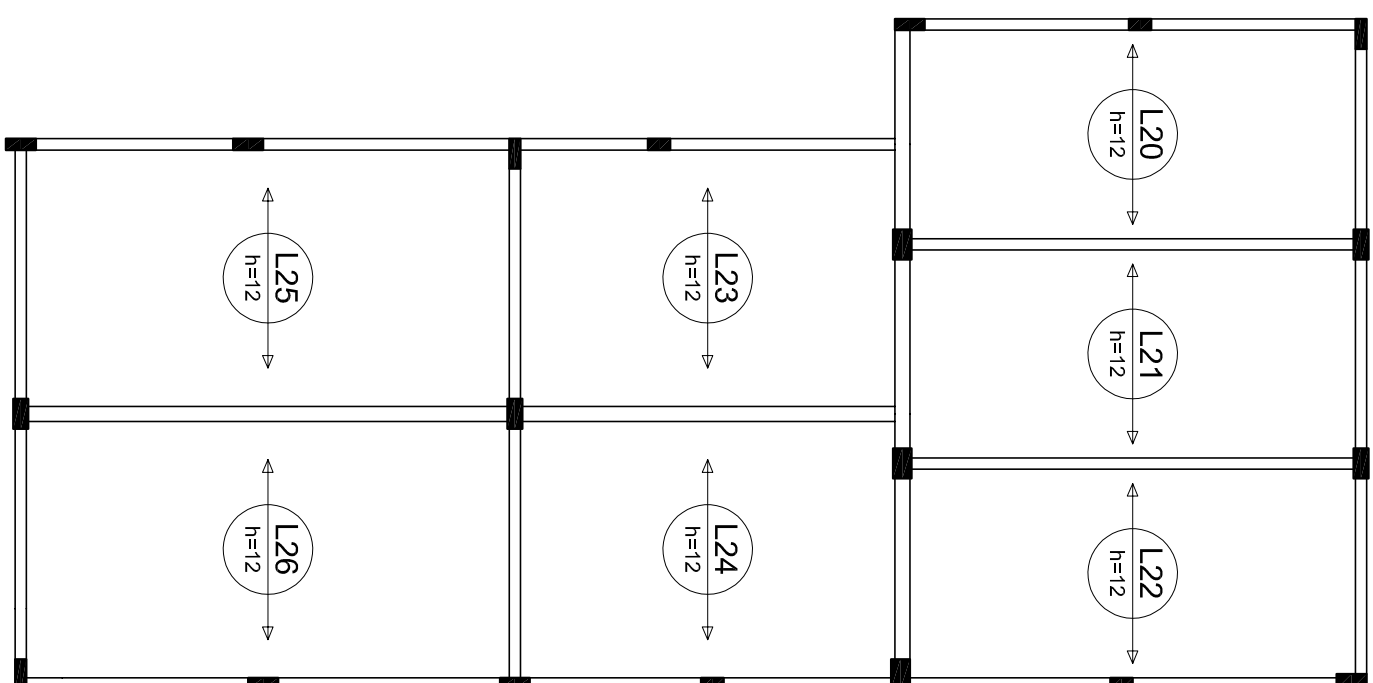
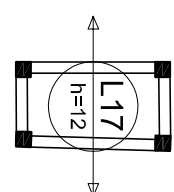


Positiva X						
ACO	N	DMM	Q	UNIT	C.TOTAL (m)	
CA60	1	8,0	6	1030	3780	
	2	8,0	1	630	630	
	3	8,0	1	630	630	

Resumo do aço				
ACO	DMM	C.TOTAL (m)	PESO + 10 % (kg)	
CA60	8,0			
PESO TOTAL		50,4	21,9	
CA60	21,9			

$$V_{\text{el. de concreto total (C-30)}} = 23.93 \text{ m}^3$$


Armação positiva das lajes do pavimento COBERTURA (Eixo X)

[illegible]